

SURGICAL



## *Hu-Friedy* **EXTRACTION SOLUTIONS**

PRECISION INSTRUMENTS DESIGNED  
TO PROVIDE TOTAL SOLUTIONS FOR  
YOUR EXTRACTION PROCEDURES.

How the best perform



# HOEXTER MESIAL DISTAL LUXATING ELEVATORS

The Hoexter Mesial/Distal Luxating Elevators are designed to protect the osseous ridge by luxating roots in the mesio-distal plane.

- Mesio-distal access with improved working end angulation
- Handcrafted with thin, sharp blades to easily penetrate the interproximal space
- Manufactured with Immunity Steel for enhanced longevity and corrosion resistance
- Available in 3mm and 5mm mesial, distal, right and left designs

## DESIGN RATIONALE BY DR. DAVID HOEXTER:

“Throughout history dentists have been taught to extract teeth in the easiest direction – towards the thinnest, supportive buccal bone. However, this technique leads to ischemic or traumatic bone loss of buccal bone resulting in cavernous buccal depressions that will not adequately support an implant.



Based on my experience, if a mesial/distal approach is used, the buccal and lingual bone is preserved and bone regeneration occurs. This enables successful implant positioning and predictable osseointegration. This is why the Hoexter Mesial/Distal Luxating Elevators are designed to protect the osseous ridge in tooth extractions by luxating roots in the mesio-distal plane. ”

- DR. DAVID HOEXTER



Mesial,  
Left,  
3 mm

| EMLL3



Distal,  
Right,  
3 mm

| EDLR3

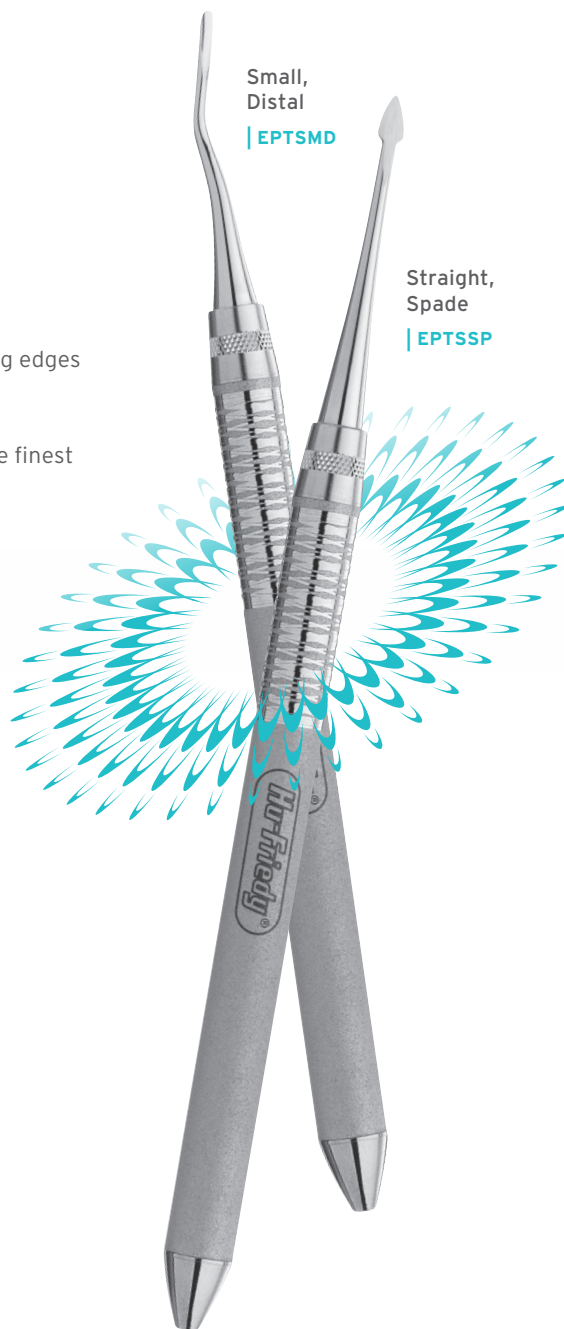
# LUXATING HYBRIDS

Luxating Hybrids are designed with thin, precisely angled tips to aid clinicians in preserving the buccal plate during atraumatic extractions.

- Improved apical and interproximal access with thin working tips
- Easily severs the periodontal ligament with finely honed, sharp cutting edges
- Enhanced oral adaptation with 7 precisely manufactured tip options
- Longevity and corrosion resistance afforded by handcrafting from the finest grade surgical stainless steel



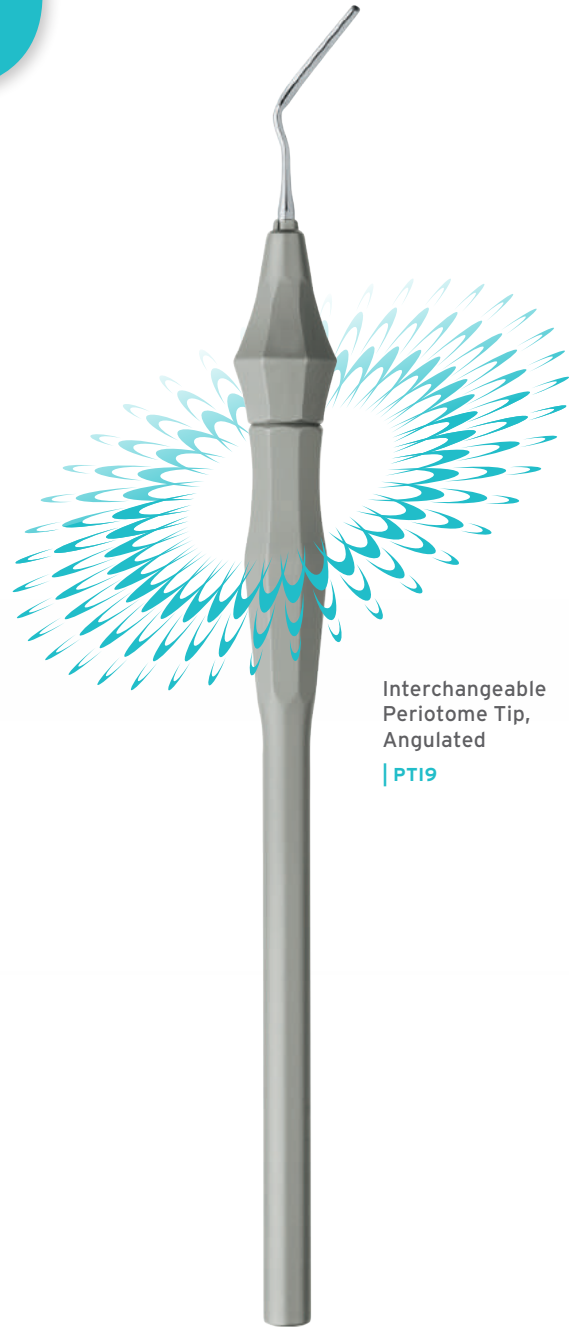
*Straight spade Luxating Hybrid severing the periodontal ligament.*



# INTERCHANGEABLE PERIOTOME

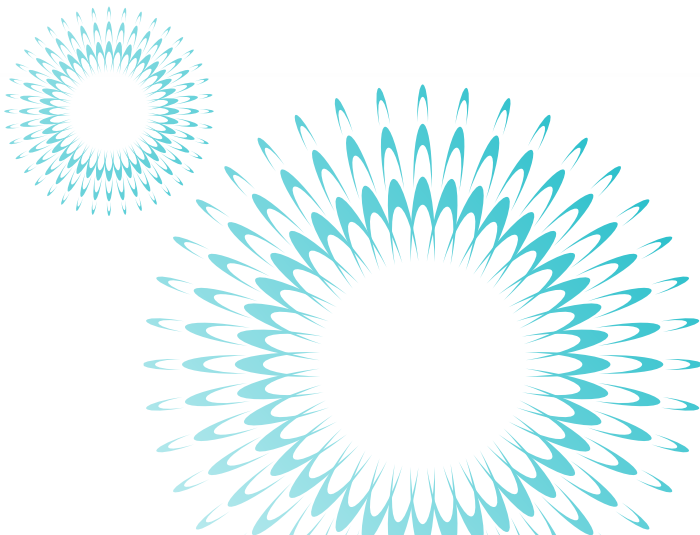
Hu-Friedy's Interchangeable Periotome features four thin, sharp interchangeable blades for severing the periodontal ligament. The blades are securely positioned in the handle and removable for easy cleaning, care and replacement.

- Thin, sharp blades available in four designs to easily sever the periodontal ligament
- Large diameter handle for enhanced ergonomics, tactile feel and optimal clinical performance
- Longevity and corrosion resistance afforded by hand-crafting from the finest grade surgical stainless steel



Interchangeable  
Periotome Tip,  
Angulated

| PTI9



# PERIOTOMES

Hu-Friedy periottomes are designed to facilitate the removal of teeth with minimal damage to the surrounding alveolar bone.

- Thin, clinically designed blades to sever attachments easily
- Unique, smooth, large diameter lightweight handle for maximum comfort and increased control\*
- Available in both Single-Ended and Double-Ended, Posterior and Anterior Applications, Satin Steel® or Black Line designs

\* Gerwatowski, L.J., McFall, D.B., Stach, D.: Carpal Tunnel Syndrome; Risk Factors and Preventive Strategies for the Dental Hygienist. *Journal of Dental Hygiene*, February 1992.

## Additional Black Line Design Features:

- Performance engineered coating for a harder, smoother surface for optimal edge retention and enhanced lubricity
- Reduced light reflection afforded by a matte finished handle and black working ends



Posterior,  
Double Ended,  
Black Line

| PT1X

Anterior,  
Straight,  
Single Ended

| PT6

# ATRAUMAIR FORCEPS

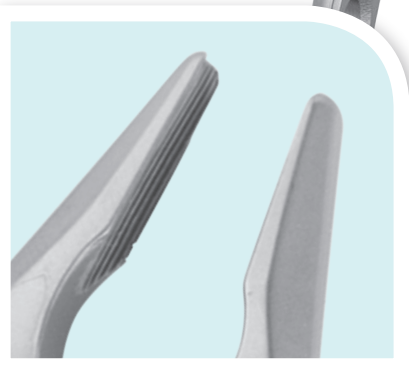
Hu-Friedy's new line of Atraumair Forceps are designed for optimal access and enhanced crown and root engagement.

Each forcep is meticulously crafted to the highest quality standard, ensuring superior performance and longevity. Atraumair Forceps are available in 13 unique patterns that provide a complete line for a variety of extraction cases.

- Enhanced beak geometries for optimal access and engagement
- Laser marked hinge for greater visibility when bagged for sterilization
- Matte finish for enhanced contrast and reduced light reflection
- Unique hole design reduces weight of the forceps, providing increased comfort and control
- Meticulously crafted from the finest surgical grade stainless steel

1 Apical Forceps  
Upper Incisors

| FAFIXS

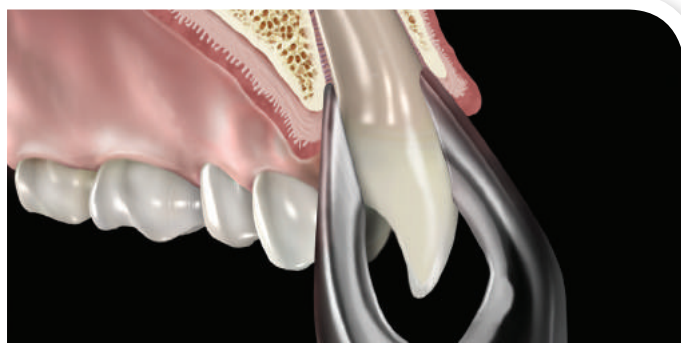




# APICAL FORCEPS

The precise, anatomical design of Hu-Friedy's Apical Forceps feature thin beaks for penetrating surrounding bone and firmly grasping roots to aid in atraumatic extractions.

- Firm, secure grasp of the crown and root with thin, sharp, tapered beaks that penetrate the PDL space and allow for apical progression
- Enhanced beak geometries and longitudinal beak serrations provide a firm, secure grasp of the crown and root reducing the risk of crushing or fracturing the tooth
- Longevity and corrosion resistance afforded by hand-crafting from the finest grade surgical stainless steel
- Reliable performance guaranteed through uncompromising quality



*An upper universal apical forceps extracting a maxillary canine.*



Upper Universal,  
Apical Forceps

| FAF150

# ERGO DYNAMIC™ ELEVATORS

One handle size does not fit all individuals. Ergo Dynamic elevators were designed to offer an alternative handle option to better fit within the palm of your hand.

- Ergo Dynamic Elevators increase comfort and ease of use for clinicians who prefer small handle elevators
- Provide better leverage for increased performance during procedures
- Handcrafted from Immunity Steel and heat treated to provide optimal sharpness and durability

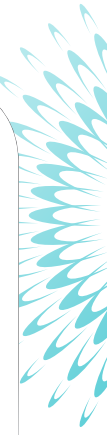
# LUXATING ELEVATORS

Luxating elevators reduce pressure on adjacent teeth as they are used in a rocking motion for cutting as opposed to a standard elevator that lifts and pries.

- Designed with sharp, thin blades for cutting periodontal ligaments
- Provide better leverage for increased performance during procedures
- Handcrafted from Immunity Steel® and heat treated to provide optimal sharpness and durability
- Available in standard, Ergo Dynamic, or Black Line designs

## Additional Black Line Design Features:

- Performance engineered coating for a harder, smoother surface providing optimal edge retention
- Reduced light reflection afforded by a matte finished handle and black working ends
- Distinct black finish for enriched contrast and visual acuity at the surgical site





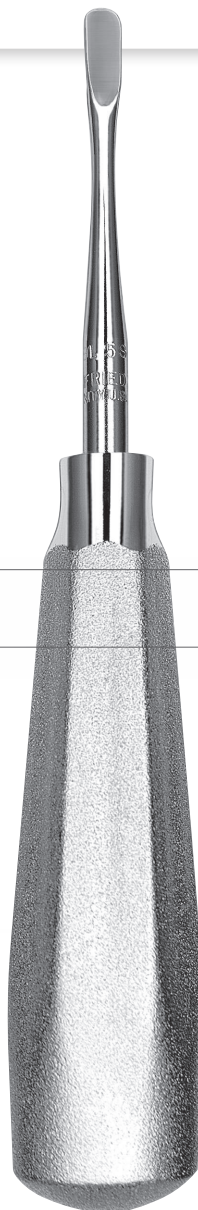
# ACTUAL SIZE COMPARISON

Ergo Dynamic Small Elevator, Standard Elevator and Black Line

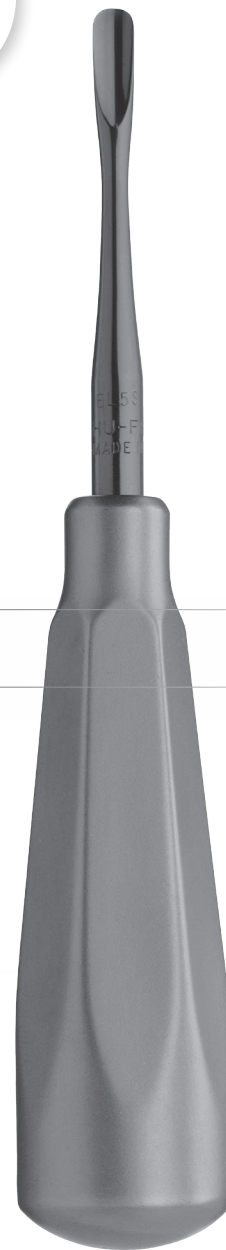
\*Black Line handle option only  
available in Luxating Elevators.



Straight, 5 mm  
| **EL5SSM**  
Ergo Dynamic Handle



Straight, 5 mm  
| **EL5S**  
Standard Handle



Straight, 5 mm  
| **EL5SX\***  
Black Line Handle

# ORDERING INFORMATION

## HOEXTER MESIAL DISTAL LUXATING ELEVATORS

Luxating Elevator, 3mm, Distal Left	<b>EDLL3</b>
Luxating Elevator, 3mm, Mesial Left	<b>EMLL3</b>
Luxating Elevator, 3mm, Distal Right	<b>EDLR3</b>
Luxating Elevator, 3mm, Mesial Right	<b>EMLR3</b>
Luxating Elevator, 5mm, Distal Left	<b>EDLL5</b>
Luxating Elevator, 5mm, Mesial Left	<b>EMLL5</b>
Luxating Elevator, 5mm, Distal Right	<b>EDLR5</b>
Luxating Elevator, 5mm, Mesial Right	<b>EMLR5</b>

## LUXATING HYBRIDS

Luxating Hybrid, Large Distal	<b>EPTLGD</b>
Luxating Hybrid, Large Mesial	<b>EPTLGM</b>
Luxating Hybrid, Small Curved	<b>EPTSMC</b>
Luxating Hybrid, Small Distal	<b>EPTSM D</b>
Luxating Hybrid, Small Mesial	<b>EPTSM M</b>
Luxating Hybrid, Small Straight	<b>EPTSM S</b>
Luxating Hybrid, Straight Spade	<b>EPTSSP</b>
Luxating Hybrid Kit	<b>EPTKIT</b>

## PERIOTOMES

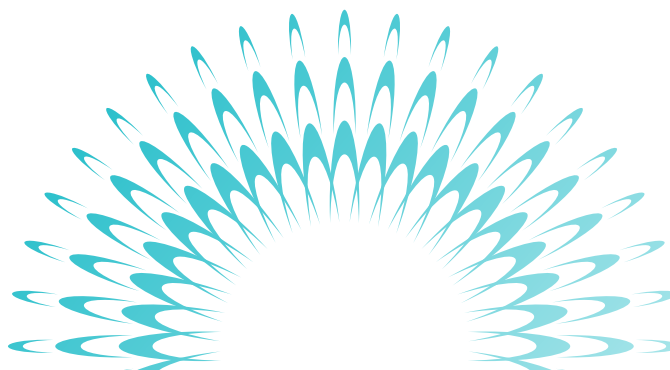
Periotome, Posterior, Double Ended	<b>PT1</b>
Periotome, Posterior, Double Ended, Black Line	<b>PT1X</b>
Periotome, Anterior, Double-Ended	<b>PT2</b>
Periotome, Anterior, Double-Ended, Black Line	<b>PT2X</b>
Periotome, Posterior, Right, Single-Ended	<b>PT3</b>
Periotome, Posterior, Right, Single-Ended, Black Line	<b>PT3X</b>
Periotome, Posterior, Left, Single-Ended	<b>PT4</b>
Periotome, Posterior, Left, Single-Ended, Black Line	<b>PT4X</b>
Periotome, Anterior, Angled, Single-Ended	<b>PT5</b>
Periotome, Anterior, Angled, Single-Ended, Black Line	<b>PT5X</b>
Periotome, Anterior, Straight, Single-Ended	<b>PT6</b>
Periotome, Anterior, Straight, Single-Ended, Black Line	<b>PT6X</b>

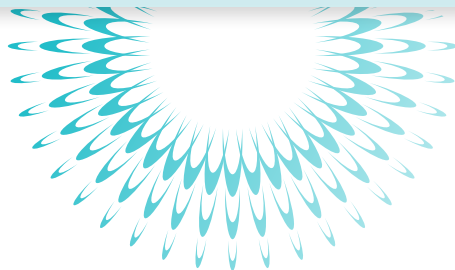
## INTERCHANGEABLE PERIOTOMES

Interchangeable Periotome Handle	<b>PTIH</b>
Interchangeable Periotome Tip, Straight Wide	<b>PTI7</b>
Interchangeable Periotome Tip, Straight Narrow	<b>PTI8</b>
Interchangeable Periotome Tip, Angulated	<b>PTI9</b>
Interchangeable Periotome Tip, Mesial/Distal Angulated	<b>PTI10</b>
Interchangeable Periotome Kit	<b>PTIKIT</b>

## ERGO DYNAMIC™ ELEVATORS

#301 Apexo Elevator, Ergo Dynamic Handle	<b>E301SM</b>
#77R Elevator (Serrated), Ergo Dynamic Handle	<b>E77RSM</b>
#B Cogswell Elevator, Ergo Dynamic Handle	<b>EBSM</b>
#34S Seldin Elevator, Straight, Ergo Dynamic Handle	<b>E34SSM</b>
Luxating Elevator, 2mm, Straight, Ergo Dynamic Handle	<b>EL2SSM</b>
Luxating Elevator, 2mm, Curved, Ergo Dynamic Handle	<b>EL2CSM</b>
Luxating Elevator, 3mm, Straight, Ergo Dynamic Handle	<b>EL3SSM</b>
Luxating Elevator, 3mm, Curved, Ergo Dynamic Handle	<b>EL3CSM</b>
Luxating Elevator, 4mm, Straight, Ergo Dynamic Handle	<b>EL4SSM</b>
Luxating Elevator, 4mm, Curved, Ergo Dynamic Handle	<b>EL4CSM</b>
Luxating Elevator, 5mm, Straight, Ergo Dynamic Handle	<b>EL5SSM</b>
Luxating Elevator, 5mm, Curved, Ergo Dynamic Handle	<b>EL5CSM</b>





### LUXATING ELEVATORS

Luxating Elevator, 2mm, Straight	<b>EL2S</b>
Luxating Elevator, 2mm, Straight, Black Line	<b>EL2SX</b>
Luxating Elevator, 2mm, Curved	<b>EL2C</b>
Luxating Elevator, 2mm, Curved, Black Line	<b>EL2CX</b>
Luxating Elevator, 3mm, Straight	<b>EL3S</b>
Luxating Elevator, 3mm, Straight, Black Line	<b>EL3SX</b>
Luxating Elevator, 3mm Curved	<b>EL3C</b>
Luxating Elevator, 3mm Curved, Black Line	<b>EL3CX</b>
Luxating Elevator, 4mm, Straight	<b>EL4S</b>
Luxating Elevator, 4mm, Straight, Black Line	<b>EL4SX</b>
Luxating Elevator, 4mm, Curved	<b>EL4C</b>
Luxating Elevator, 4mm, Curved, Black Line	<b>EL4CX</b>
Luxating Elevator, 5mm, Straight	<b>EL5S</b>
Luxating Elevator, 5mm, Straight, Black Line	<b>EL5SX</b>
Luxating Elevator, 5mm, Curved	<b>EL5C</b>
Luxating Elevator, 5mm, Curved, Black Line	<b>EL5CX</b>

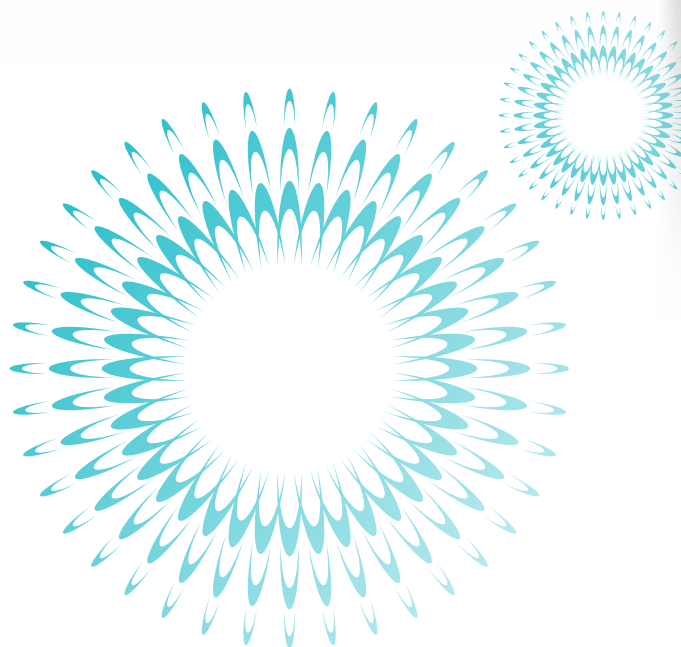
### ATRAUMAIR FORCEPS

36 Forceps, Lower Incisors and Canines	<b>F36XS</b>
35 Forceps, Upper Premolars	<b>F35XS</b>
13 Forceps, Lower Premolars	<b>F13XS</b>
1 Standard Forceps, Upper Incisors	<b>F1XS</b>
23 Cowhorn Forceps, Lower Molars	<b>F23XS</b>
67 Forceps, Upper Molars	<b>F67XS</b>
79 Forceps, Lower Molars	<b>FX79XS</b>
73 Forceps, Lower Molars	<b>FX73XS</b>
51 Root Forceps, Serrated, Upper Roots	<b>FX51XS</b>
45 Root Forceps, Serrated, Lower Roots	<b>FX45XS</b>
35 Apical Forceps, Upper Premolars	<b>FAF35XS</b>
36 Apical Forceps, Lower Premolars, Canines and Incisors	<b>FAF36XS</b>
1 Apical Forceps, Upper Incisors	<b>FAF1XS</b>

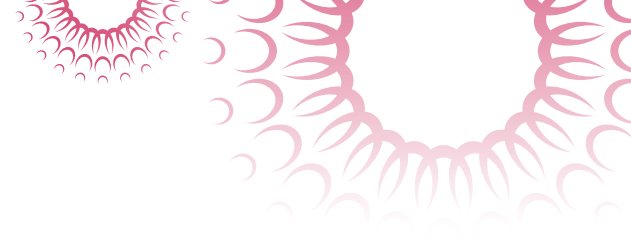


### APICAL FORCEPS - PRESIDENTIAL SERIES

Upper Anterior	<b>FAF1</b>
Upper Universal	<b>FAF150</b>
Lower Universal	<b>FAF151</b>
Lower Molar	<b>FAF222</b>
Upper Molar, European Style	<b>FAFX67A</b>
Lower Anterior, European Style	<b>FAFX74N</b>



# SUGGESTED KIT LISTS



## ATRAUMATIC EXTRACTION KIT

#5 European Style Round Scalpel Handle	<b>10-130-05E</b>
Urban Cheek Retractor	<b>CRURBAN</b>
Luxating Elevator 3mm, Curved, Black Line	<b>EL3CX</b>
Luxating Elevator 3mm, Straight, Black Line	<b>EL3SX</b>
1 Apical Forceps, Upper Incisors, Atraumair	<b>FAF1XS</b>
35 Apical Forceps, Upper Canines and Premolars, Atraumair	<b>FAF35XS</b>
36 Apical Forceps, Lower Premolars and Incisors, Atraumair	<b>FAF36XS</b>
16-Instrument Signature Series® Cassette w/ Accessory Area, Red	<b>IM4160</b>
Cone Socket Mirror Handle	<b>MH6</b>
#5 HD CS Mirror SS	<b>MIR5HD</b>
Castroviejo with Round Handle, Perma Sharp®	<b>NH5024R</b>
9 Molt Periosteal Elevator, Black Line	<b>P9X</b>
152 Kramer-Nevins Periosteal, Black Line	<b>PKN152X</b>
Periotome, Posterior, Black Line	<b>PT1X</b>
Periotome, Anterior, Black Line	<b>PT2X</b>
Goldman-Fox Curved Super-Cut Scissors, Black Line	<b>S16SCX</b>
Adson-Brown Tissue Pliers, Perma Sharp®	<b>TP5043</b>

## MINIMALLY INVASIVE EXTRACTION KIT

Luxating Elevator, 3mm, Straight, Black Line	<b>EL3SX</b>
Luxating Elevator, 5mm, Straight, Black Line	<b>EL5SX</b>
Luxating Elevator, 3mm, Curved, Black Line	<b>EL3CX</b>
Luxating Elevator, 5mm, Curved, Black Line	<b>EL5CX</b>
1 Posterior Periotome, Black Line	<b>PT1X</b>
2 Anterior Periotome, Black Line	<b>PT2X</b>
1 Apical Forceps, Upper Incisors, Atraumair	<b>FAF1XS</b>
35 Apical Forceps, Upper Canines and Premolars, Atraumair	<b>FAF35XS</b>
79 Forceps, Lower Molars, Atraumair	<b>FX79XS</b>
67 Forceps, Upper Molars, Atraumair	<b>FX67XS</b>
36 Apical Forceps, Lower Premolars and Incisors, Atraumair	<b>FAF36XS</b>
Signature Series 16-Instrument Cassette, Blue	<b>IM4168E40R</b>

For more information about  
Hu-Friedy's Total Solutions visit

**HU-FRIEDY.COM**

PERIODONTAL



RESTORATIVE



ORTHODONTIC



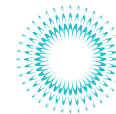
INSTRUMENT  
MANAGEMENT



ENDODONTIC



SURGICAL



ULTRASONIC  
SCALING



Hu-Friedy Mfg. Co., LLC: 3232 N. Rockwell St. | Chicago, IL 60618 | USA  
Telephone: 1-800-Hu-Friedy (1-773-975-6100) | Website: Hu-Friedy.com

©2014 Hu-Friedy Mfg. Co., LLC. All rights reserved. HF-252/1214

**Hu-Friedy**