

# Impregum™

Soft Polyether Impression Material



Get accurate detail  
even in moist conditions

**3M** ESPE

# Accurate

This material makes it easier to capture accurate impressions the first time, reducing retakes and adjustments.

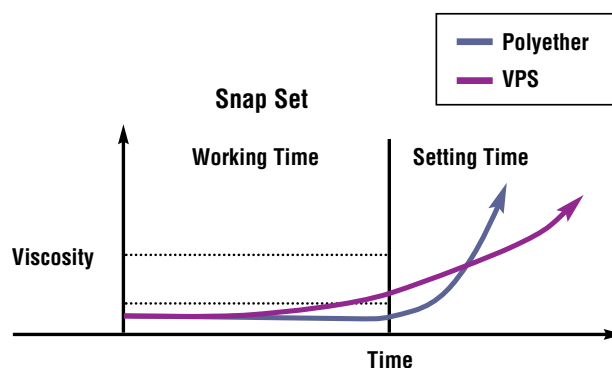
Many doctors use both polyether and VPS impression materials. But when the situation calls for capturing fine detail – even in a wet environment – then Impregum™ Soft Polyether Impression Material is the one to reach for. Its characteristic profile helps you capture accurate detail the first time – which can lead to fewer retakes, remakes and adjustments for you, and a more comfortable restoration for your patients.

The less-rigid, *SOFT* polyether gives you the same great results, but is easier to remove. And, the NEW mint flavor is more pleasing to your patients.



An ultimately forgiving “snap-set behavior” means less stress for dentists and dental assistants.

Impregum Soft material is *ultimately forgiving*. Snap-set behavior – which is typical for polyether – means the material will not start setting before the working time ends. When it does set, it does so immediately. You can have greater assurance of achieving precise-fitting restorations without distortion, across a wide variety of techniques.



## Summary of advantages

- Better initial hydrophilicity than any VPS – provides void-free impressions in moist conditions
- Excellent flow properties – captures fine details for precise impressions
- “Snap-set behavior” of *soft* polyether is ultra-forgiving
- Less-rigid, *soft* polyether is easier to remove – great for dual-arch trays
- Quick-Step material cuts working and setting times by at least 33% over Impregum™ Soft Polyether Impression Material

## Outstanding initial hydrophilicity allows excellent detail reproduction in a wet environment.

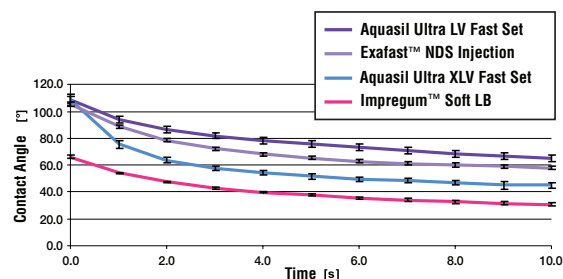
Polyether is hydrophilic by nature of its chemical makeup. From the time it is mixed, until it sets, *moisture in the mouth should not interfere with achieving accurate, void-free impressions!*

- Outstanding initial hydrophilicity displaces moisture right from the start of mix – when it counts – for void-free impressions!
- Preferred over VPS for excellent detail reproduction in a wet environment!<sup>1</sup>
- Moisture and saliva will not compromise marginal accuracy or integrity.



Water drop on Aquasil Impression Material prior to set (left). Initially, Aquasil shows hydrophobic behavior. Water drop on Impregum™ Soft Polyether Impression Material prior to set (right).

Source: Mondon M., Ziegler Chr., Reusch B., “Surface Wettability During the Curing Process of Impression Materials,” AADR, #618, 2001.



Contact angle measurement on unset material is a method used to determine hydrophilicity. These charted results show why Impregum™ Soft Polyether Impression Material is valuable to dentists for getting precise impressions the first time.

Source: Klettke T., Kuppermann B., Führer C., Richter B., “Hydrophilicity of Precision Impression Materials During Working Time,” CED/IADR, Istanbul, 2004, submitted for publication.

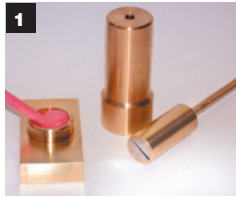
## Impregum™ Soft Impression Material flows better into tough spots to capture fine detail.

The Shark Fin Test proves that Impregum Soft polyether material flows better into the toughest spots, yet does not slump – capturing more detail than *any* VPS! In fact, it offers the best flow behavior during the *entire* working time.

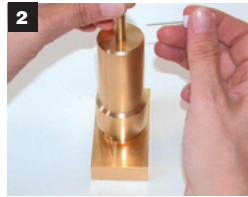


An established method for analyzing flow properties is the Shark Fin Test, developed by impression experts at 3M ESPE. Results shown are at the end of the manufacturer's recommended working time.<sup>2</sup>

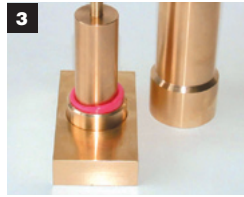
## Shark Fin Test Method



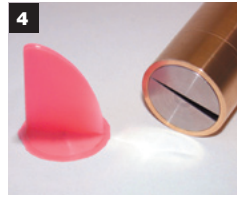
1 Approximately 10ml of impression material is injected to fill the receptacle of the Shark Fin device. The mixing tip is buried into the receptacle to avoid trapping air.



2 A fixed mold and 147g weight are placed over the receptacle. The pin is released, allowing the weight to sink slowly into the material. (The 147g weight accurately reflects the pressure applied during clinical placement in the mouth.)



3 The material is allowed to set.



4 The molds are separated and samples are measured using a caliper accurate to 0.01mm.

**The taller the fin height, the better the flow.**

## Quick Step material cuts working and setting times by 33%, and helps “lock in” an accurate impression on the first try.

Dentists report Impregum™ Soft Quick Step Polyether Impression Material has enabled them to capture detailed impressions on the first try, and produce restorations that require fewer adjustments. Plus, in their opinions, finished cases look better, and are less stressful to produce.

- Offers maximum working time of 1 minute, and a setting time in the mouth of 3 minutes.
- Ideal for 1-2 unit cases.



## Impregum Soft Polyether Impression Material indications

- Crowns and bridges
- Inlays and onlays
- Functional impressions
- Implant abutments
- Quick-setting materials especially suited for single-unit and two-unit impressions

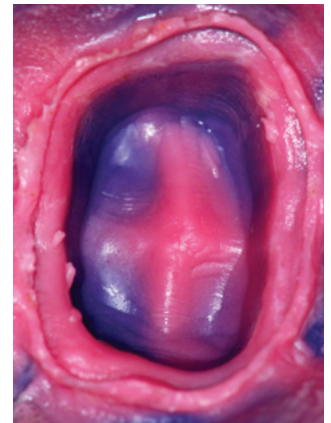


Photo courtesy of Jorge Perdigao, DMD, and Holmer Meiser, DDS, University of Minnesota.

“The hydrophilic properties ensure that my impressions have outstanding marginal accuracy and integrity, despite the presence of moisture and saliva.”

Dr. David DeGrave  
Green Bay, WI

<sup>1</sup> Source: 3M ESPE internal data. For test procedure details, call 3M ESPE at 800-634-2249.

<sup>2</sup> Photo documentation by 3M ESPE. Data on file.



# Products designed for the way you like to work ...

For every clinical situation, you'll find an Impregum™ Soft Polyether Impression Material to suit your technique and procedure. Choose from a wide range of viscosities and set/working times. Tray material now available in both Penta™ AND handgun delivery.

More proven solutions brought to you by 3M ESPE, the worldwide leader in impression materials.



Choice of two deliveries: **Pentamix™ 3 Automatic Mixing Unit** dispenses completely homogeneous mix at the push of a button. Or convenient **handgun dispensing**.

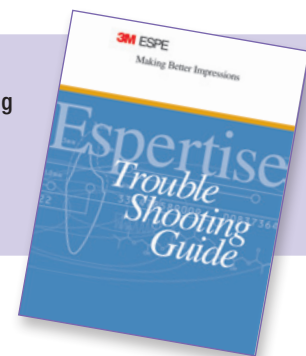
## Ordering Information

Item #	Product Information
<b>P31739</b>	<b>Impregum™ Penta™ Soft Heavy Body/Light Body Introductory Kit</b> Kit Includes: 1 base paste HB – 300ml; 1 catalyst HB – 60ml; 1 Penta cartridge HB; 10 Penta mixing tips, red; 2 cartridges LB – 50ml; 10 cartridge mixing tips, white; 10 intraoral tips, white; 1 cartridge dispenser; 1 polyether tray adhesive – 17ml
<b>P31779</b>	<b>Impregum™ Penta™ Soft Quick Step Heavy Body/Light Body Introductory Kit</b> Kit Includes: 1 base paste HB – 300ml; 1 catalyst HB – 60ml; 1 Penta cartridge HB; 10 Penta mixing tips, red; 10 cartridge mixing tips, white; 10 intraoral tips, white; 1 polyether tray adhesive – 17ml; 2 cartridges LB – 50ml
<b>P31735</b>	<b>Impregum™ Penta™ Soft Medium Body Introductory Kit</b> Kit Includes: 1 base paste MB – 300ml; 1 catalyst MB – 60ml; 1 Penta cartridge MB; 10 Penta mixing tips, red; 1 Penta elastomer syringe; 1 polyether tray adhesive – 17ml
<b>P31771</b>	<b>Impregum™ Penta™ Soft Quick Step Medium Body Introductory Kit</b> Kit Includes: 1 base paste MB – 300ml; 1 catalyst MB – 60ml; 1 Penta cartridge MB; 10 Penta mixing tips, red; 1 Penta elastomer syringe; 1 polyether tray adhesive – 17ml
<b>P31685</b>	<b>Impregum™ Penta™ Medium Body Introductory Kit</b> Kit Includes: 1 base paste MB – 300ml; 1 catalyst MB – 60ml; 1 Penta cartridge MB; 10 Penta mixing tips, red; 1 elastomer syringe; 1 polyether tray adhesive – 17ml
<b>31786</b>	<b>Impregum™ Soft Tray Introductory Kit</b> Kit includes: 3 Tray cartridges – 50ml; 1 LB cartridge – 50ml; 10 cartridge mixing tips, purple; 10 cartridge mixing tips, white; 10 intraoral tips, white; 1 polyether tray adhesive – 17ml
<b>31789</b>	<b>Impregum™ Soft Quick Step Tray Introductory Kit</b> Kit includes: 3 Tray cartridges – 50ml; 1 LB cartridge – 50ml; 10 cartridge mixing tips, purple; 10 cartridge mixing tips, white; 10 intraoral tips, white; 1 polyether tray adhesive – 17ml

Item #	Product Information
<b>31741</b>	<b>Impregum™ Penta™ Soft Heavy Body Refill Pack</b> 2 base paste – 300ml; 2 catalyst – 60ml
<b>31769</b>	<b>Impregum™ Penta™ Soft Quick Step Heavy Body Refill Pack</b> 2 base paste – 300ml; 2 catalyst – 60ml
<b>31731</b>	<b>Impregum™ Penta™ Soft Medium Body Refill Pack</b> 2 base paste – 300ml; 2 catalyst – 60ml
<b>31765</b>	<b>Impregum™ Penta™ Soft Quick Step Medium Body Refill Pack</b> 2 base paste – 300ml; 2 catalyst – 60ml
<b>31642</b>	<b>Impregum™ Penta™ Medium Body Refill Pack</b> 2 base paste – 300ml; 2 catalyst – 60ml
<b>31785</b>	<b>Impregum™ Soft Tray Refill Pack</b> 4 cartridges – 50ml; 10 cartridge mixing tips, purple
<b>31785J</b>	<b>Impregum™ Soft Tray Jumbo Refill Pack</b> 30 cartridges – 50ml
<b>31788</b>	<b>Impregum™ Soft Quick Step Tray Refill Pack</b> 4 cartridges – 50ml; 10 cartridge mixing tips, purple
<b>31788J</b>	<b>Impregum™ Soft Quick Step Tray Jumbo Refill Pack</b> 30 cartridges – 50ml
<b>31746</b>	<b>Impregum™ Penta™ Soft Light Body Refill Pack</b> 2 base paste – 300ml; 2 catalyst – 60ml
<b>31752</b>	<b>Impregum™ Soft Light Body Refill Pack</b> 4 cartridges – 50ml; 20 cartridge mixing tips, white
<b>31767</b>	<b>Impregum™ Soft Quick Step Light Body Refill Pack</b> 4 cartridges – 50ml; 20 cartridge mixing tips, white
<b>30500</b>	<b>Polyether Retarder Refill Pack</b> 1 – 8ml tube (Prolongs working time up to 1 minute)
<b>71512</b>	<b>50 Penta™ Mixing Tips, Red</b>
<b>71451</b>	<b>50 Cartridge Polyether Mixing Tips, White</b>
<b>71461N</b>	<b>50 Cartridge Polyether Intraoral Tips, White</b>
<b>71454</b>	<b>50 Cartridge Polyether Mixing Tips, Purple</b>

## Make Better Impressions

Even the most experienced practitioner, using the best materials, can encounter difficulties when making an impression. 3M ESPE has taken its long history in developing and testing impression materials, and assembled the **Making Better Impressions Troubleshooting Guide**. It identifies common impression problems and offers solutions. To get your **FREE copy**, download it now from our website – or call Customer Care at 1-800-634-2249, ext. 1.



**DENTAL LABS:** Call for your **FREE copy** of **Lab Handling Guidelines for Polyether Impressions**.  
**Customer Care Center:** 1-800-634-2249 [www.3MESPE.com/GreatImpressions](http://www.3MESPE.com/GreatImpressions)

## 3M ESPE

### Dental Products

3M Center  
Building 275-2SE-03  
St. Paul, MN 55144-1000  
U.S.A.  
1-800-634-2249

### 3M Canada

Post Office Box 5757  
London, Ontario N6A 4T1  
Canada  
1-888-363-3685

Please recycle. Printed in U.S.A.  
© 3M 2008. All rights reserved.  
70-2009-3882-0

3M, ESPE, Expertise, Impregum, Penta and Pentamix are trademarks of 3M or 3M ESPE AG. Used under license in Canada. Aquasil and Exafast are not trademarks of 3M.