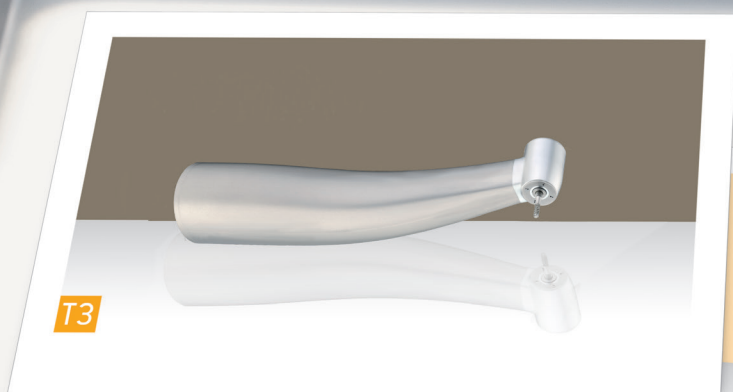


SIRONA INSTRUMENTS T3 AND T4

# TWO CLASSES, ONE CLAIM: ONLY THE BEST INTO YOUR HANDS.



SIRONA.COM

The Dental Company

sirona.

# T3 AND T4 CLASSES — FUNCTIONAL AND HIGH PERFORMANCE.

T3 RACER OR T3 MINI — HIGH SPEED PERFORMANCE  
WITH FIXED CONNECTION.

- Functional, high-performance and durable
- Ergonomic design
- Made in Germany
- Up to 20 watts

T4 LINE —  
YOUR CHOICE FOR  
ESSENTIAL WORKING.

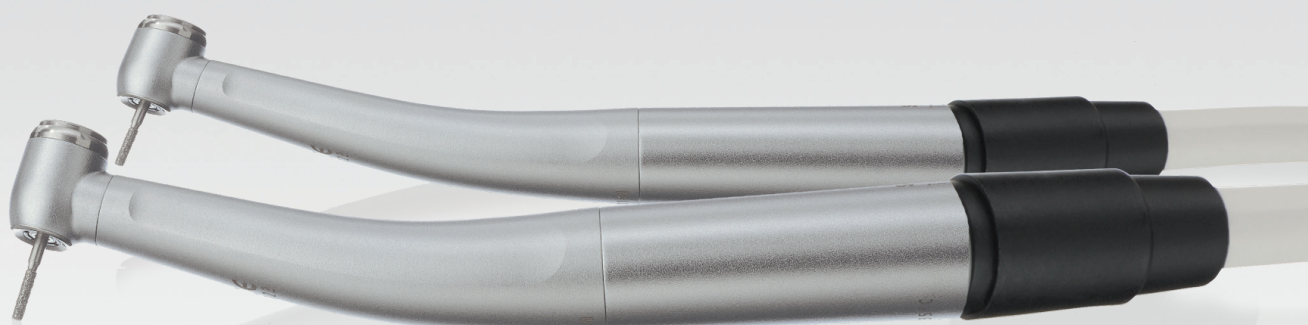
- Essential and ergonomic
- Made in Germany
- Push button chuck

T4 RACER —  
BASIC PRICE, RELIABLE QUALITY.

- Ceramic ball bearings
- Single Spray
- Up to 17 watts
- Push button chuck



# T3 TURBINES.



## T3 RACER AND T3 MINI – MAXIMUM PERFORMANCE

### FUNCTIONAL, MAXIMUM PERFORMANCE AND DURABLE

The fixed connection turbines provide best technical quality “Made in Germany” at an attractive price. In direct comparison to the competitors, they convince with their functionality, maximum performance and durability.

### ALWAYS COMPATIBLE

- The Racer and mini head sizes are available for two fixed connection types, ISO 4-hole and Borden 2/3-hole
- The use of ceramic ball bearings in the ergonomic sleeve makes the instruments very durable
- The burr can be changed easily thanks to the push-button chuck
- The Protective-Head-System (PHS) makes the instrument hygienically perfect
- The turbines are sterilizable at up to 134 °C and thermodisinfectable
- T3 mini - extra small head
- Up to 20 watts
- Push button chuck



ISO 4-hole



Borden 2/3-hole

## TECHNICAL DATA OVERVIEW\*

	T3 Racer	T3 mini
Power (Watt)	20	17
Speed (rpm)	400.000	420.000
Spray	3	3
Head diameter (mm)	11.4	10.2
Head height (mm)	14.8	13.9
Weight (g)	53	52
Equipment	1.6 FG	1.6 FG
REF. Midwest	59 37 268	59 37 276
REF. Borden	59 50 105	59 50 113

\*All technical specifications are approximate values.

# T4 STRAIGHT AND CONTRA-ANGLE HANDPIECES.



## T4 LINE – BASIC PRICE – RELIABLE QUALITY.

The straight and contra-angle handpiece of the T4 class delivers with an essential design and a robust steel sleeve. Due to the air motor available with Midwest 4-hole or Borden 2-hole – you will stay flexible, regardless of the treatment unit you are using.

- External Spray
- Push button chuck
- For use with burs that have a 2.35 mm burr shaft diameter



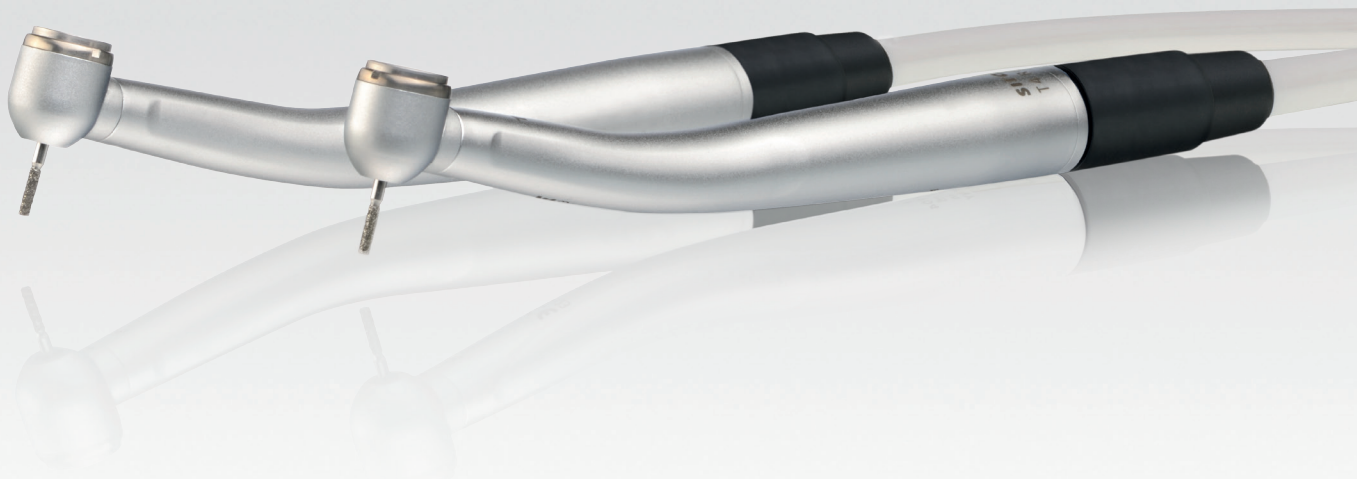
## TECHNICAL DATA OVERVIEW\*

	T4 LINE B 40	T4 LINE BH 40	T4 Air Motor BM / B0
Speed (rpm)	max. 40,000 >18,000 if connected to the T4 Air Motor BM/B0	max. 40,000	18,000 – 21,000 clockwise/counterclockwise
Spray	External	–	External
Head diameter (mm)	8.7	–	–
Head height (mm)	12.4	–	–
Weight (g)	72	77	90
Recommended burr size (ISO)	2.35 mm	2.35 mm	–
REF.	64 01 827	64 01 843	64 32 947 / 64 32 954

\* All technical specifications are approximate values.



# T4 TURBINES.



## T4 TURBINES – BASIC PRICE – RELIABLE QUALITY.

The highspeed handpiece of the T4 class convinces with its combination of an essential design and exceptional high power level of up to 17 watts. Regardless which treatment unit you use, with Midwest 4-hole and Borden 2-hole you have always the right choice.

- Essential design in a chrome-plated version
- Ceramic ball bearings
- Single Spray
- Up to 17 watts
- Push button chuck



ISO 4-hole



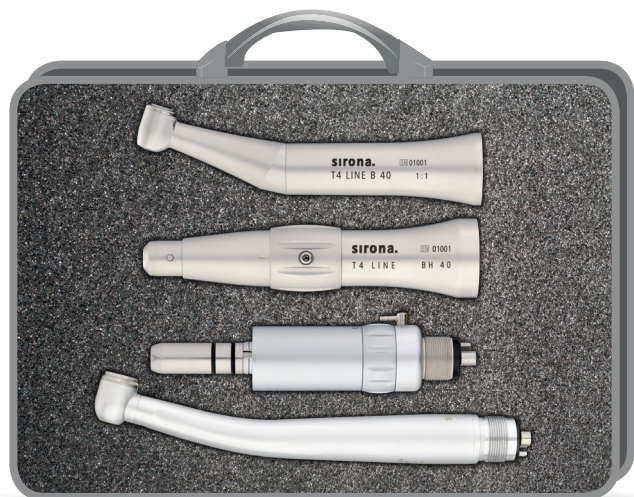
Borden 2/3-hole

## TECHNICAL DATA OVERVIEW\*

	T4 Racer Midwest	T4 Racer Borden
Power (Watt)	17	17
Speed (rpm)	400.000	400.000
Spray	Single	Single
Head diameter (mm)	11.4 mm	11.4 mm
Head height (mm)	14.5 mm	14.5 mm
Weight (g)	43	43
Recommended burr size (ISO)	1.6 mm	1.6 mm
REF.	63 71 467	64 05 489

\* All technical specifications are approximate values.

# AVAILABLE KITS.

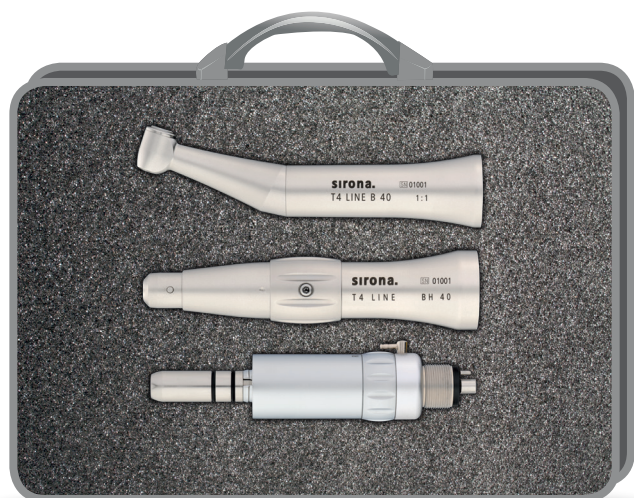


## T4 LINE KIT BMT / BOT

- Including T4 LINE B 40
- Including T4 LINE BH 40
- Including Air Motor
- Including T4 Racer

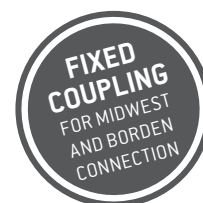


Type	REF.
T4 LINE Kit BMT	64 18 318
T4 LINE Kit BOT	64 18 326



## T4 LINE KIT BM / BO

- Including T4 LINE B 40
- Including T4 LINE BH 40
- Including Air Motor



Type	REF.
T4 LINE Kit BM	64 02 049
T4 LINE Kit BO	64 02 056



## T4 LINE KIT BI

- Including T4 LINE B 40
- Including T4 LINE BH 40

Type	REF.
T4 LINE Kit BI	64 02 064

# ALWAYS AT THE FOREFRONT OF INNOVATION!

As global innovation leader for dental equipment, we continuously invest in research and thus in the future of modern dentistry. By networking digital technologies with integrated solutions and optimizing the treatment workflow, we create improved treatment results, more comfort and safety for the patient as well as time and cost savings in everyday work. The combination of constant innovative power and globally growing sales and service structures makes Sirona the global market leader trusted by thousands of practices and labs around the world.

**Enjoy every day. With Sirona.**



#### **CAD/CAM systems**

From pioneer to new standard. For almost 30 years we have been developing digital dentistry and creating new possibilities for the future practice and lab.



#### **Imaging systems**

Best image quality with the lowest dose. More than 100 years of developing x-rays for the dental practice make us the number 1 innovation partner.



#### **Treatment centers**

The business card of modern practices. We are striving to create the ideal ergonomic and innovative center. Individually tailored to the well-being and demands of the patient and dentist.



#### **Instruments**

Advantages that speak for themselves. We make sure that we provide the right balance of proven quality, individual ergonomics and innovative technology for user-friendly work.



#### **Hygiene systems**

Competence that gives you safety. When it comes to hygiene in the practice, we do not take any shortcuts.

The Dental Company

**sirona.**