

MAXIMUM PRECISION IN UP TO 30% LESS CHAIR TIME

OPTIMAL
WORKING
TIME



SHORT
SETTING
TIME

V-Posil

TIME OPTIMIZED HIGH PRECISION
VPS IMPRESSION SYSTEM



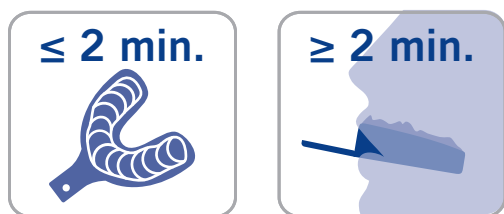
V-Posil

FASTER AND HIGHER PRECISION WITH MORE FLEXIBILITY

Today there are many quality impression materials available. VOCO's development approach was to create a material that would provide elevated technical properties while increasing ease, speed and flexibility. The result is V-Posil, a maximum precision VPS impression system that reduces set times; while allowing for an adjustable working time. V-Posil's heavy body tray material has a unique heavy soft formulation that allows for easier removal from the mouth. The extremely low contact angle combined with V-Posil's rapid snap set reduces the time spent in the critical zone, making the impression more precise while minimizing costly retakes.

TIME OPTIMIZED WORKING AND SETTING TIMES

Up to 2-minutes of adjustable working time gives control over the pace of the procedure, while the abbreviated 2-minute thermo-activated set time, saves time and improves patient comfort. That means that V-Posil combines the working time of a regular set with the short setting times of a fast-set in one impression material.



Through the use of a thermo-activated set time, V-Posil and its adjustable working time minimizes time constraints and is perfect for procedures that require both a fast set such as single units or a regular set such as multiple unit veneer cases. V-Posil's faster setting time saves up to 30% of time compared to the use of regular set impression materials.

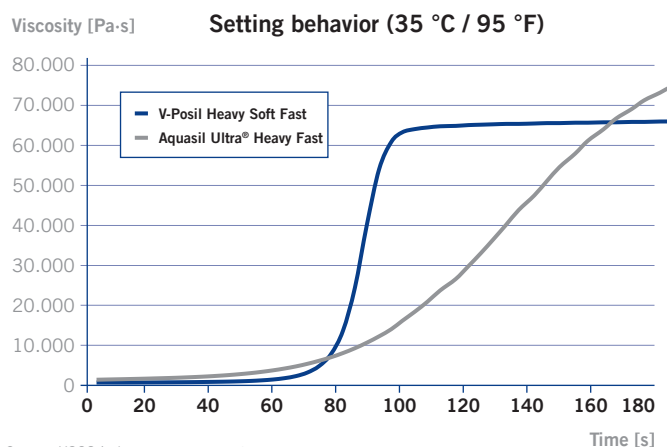
NO DRAG

The working times required for V-Posil's tray and wash materials are perfectly synchronized in regards to set time and thus will blend seamlessly, providing excellent detail without drag.

FAST SNAP SET REDUCES TIME IN THE CRITICAL ZONE

V-Posil is thermo-activated. Once the loaded tray is placed into the patient's mouth, the material starts to set quickly due to the increased temperature. From the time the tray is inserted into the patient's mouth until the material reaches dimensional stability is referred to as the critical zone. During this time any movements of the tray could cause distortions resulting in poorly fitting restorations or time-consuming retakes. V-Posil reduces this time to only 40 seconds and therefore minimizes the number of retakes and improves patient comfort.

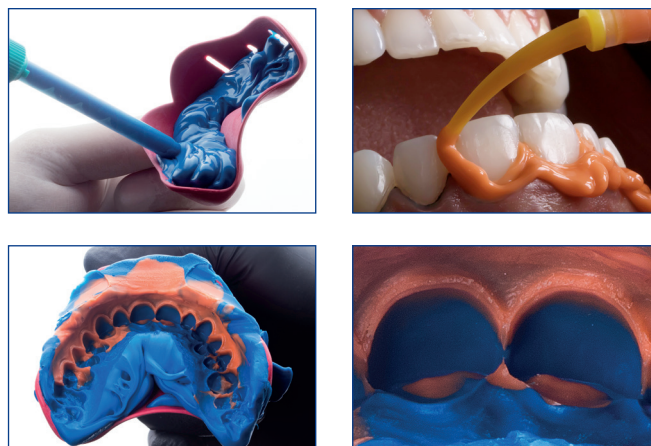
Snap set ensures accuracy



V-Posil

A NEW LEVEL OF PRECISION

Due to its low polyether-like contact angle of less than 10°, V-Posil's superior hydrophilicity displaces fluids (saliva, blood etc.) creating an enhanced contact to the dental anatomy – yielding more precise impressions.



Source: Dr. Mauricio Watanabe, Brazil

EXCELLENT HYDROPHILICITY, INCREASED WETTABILITY

Vinyl polysiloxanes (VPS), i.e. addition-cured silicones, are naturally hydrophobic. With V-Posil, the wetting capacity has been optimized (rendering it hydrophilic) allowing it to flow reliably in a moist environment without absorbing any moisture to accurately reproduce the patient's intraoral structures.

LOW CONTACT ANGLE

The smallest possible contact angle reflects a good wetting capacity of a material on a surface. In Figures 1–3 the contact angle of two VPS (A-silicone based) precision impression materials and a contact angle of a polyether material are depicted. V-Posil reaches its impressively low contact angle already after 15 seconds and therefore immediately displaces fluids (saliva, blood etc.) for a more accurate impression.

BETTER STONE MODELS

V-Posil's impressively low contact angle will improve even more after the material is fully set. Lab technicians will appreciate this low post-set hydrophilicity (less than 6° contact angle) which allows for more accurate stone models and better fitting restorations. This increases productivity by reducing the need to adjust before final cementation. V-Posil easily trims without the existence of air-bubbles, another feature that lab technicians value.

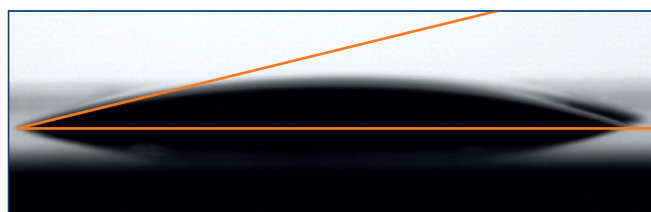


Figure 1: V-Posil Light Fast / V-Posil X-Light Fast – small contact angle of < 10°

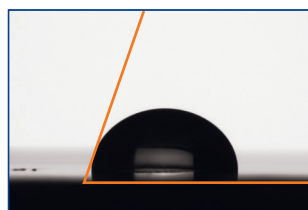
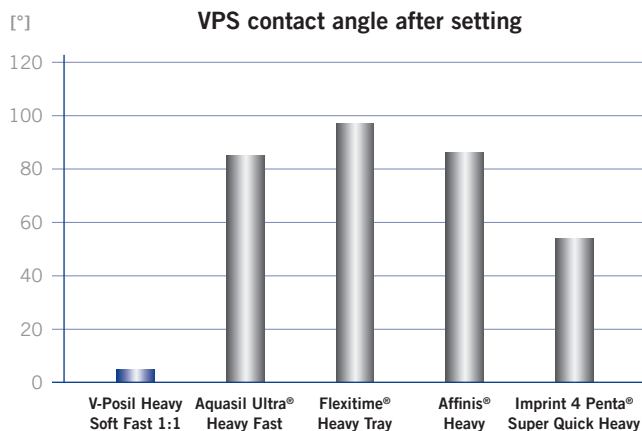


Figure 2: Aquasil Ultra XLV® – contact angle of ~ 71°



Figure 3: Impregum Garant L Duo Soft® – contact angle of ~ 24°

Source: VOCO in-house measurement



Source: VOCO is not the holder of any mentioned trademarks

V-Posil

EASY LOADING AND REMOVAL WITH DIMENSIONAL ACCURACY

HEAVY SOFT CONSISTENCY

V-Posil Heavy Soft Fast tray material offers an optimal viscosity to load the tray without slumping but remains soft enough after it sets for easy removal from the mouth without tearing. V-Posil's matching wash materials Light Fast and X-Light Fast have the same setting characteristics as the tray material and therefore will blend seamlessly, providing excellent detail without drag.



Figure 4: Stretching of V-Posil X-Light Fast

With a stretch factor of 2.6 times, V-Posil X-Light Fast supports safe removal

HIGH TOUGHNESS

AVOIDS TEARING AND RETAKES

After V-Posil has set up, the areas of thin and fine details have the potential to come under particular strain during removal, but thanks to V-Posil's hightoughness (tear strength) the impression can be safely removed from the patient's mouth without tearing at the margins. As shown in Figure 4, V-Posil X-Light Fast, for example, can stretch by 2.6 times the original length of the standardized test specimen, providing the strength and flexibility required to preserve the precision initially achieved.

EXCELLENT ELASTIC RECOVERY FOR DIMENSIONAL ACCURACY

During removal from the patient's mouth, the impression is stretched over the equator of the teeth, which temporarily changes its dimensions. V-Posil's excellent elastic recovery from deformation guarantees a dimensionally accurate reproduction of the dentition whether for immediate use in the office or extended use at the dental lab.

TECHNICAL DATA

Product	Mixing ratio	Maximum working time at 23 °C / 74 °F ≤ min.	Intraoral working time at 35 °C / 95 °F ≤ min.	Intraoral setting time at 35 °C / 95 °F ≥ min.	Shore A hardness (approx.)	Linear dimensionel change (approx.) %	Elastic Recovery test (approx.) %
V-Posil Putty Fast	1:1	2		2	66	-0.25	98.5
V-Posil Heavy Soft Fast	5:1	2		2	55	-0.25	99.3
V-Posil Heavy Soft Fast	1:1	2		2	55	-0.25	99.3
V-Posil Light Fast	1:1	2	1 minute	2	47	-0.20	99.6
V-Posil X-Light Fast	1:1	2	1 minute	2	47	-0.20	99.6

*Data on file

**VOCO Internal Data

Registrado X-tra

RIGID – FAST – FLEXIBLE

Registrado X-tra is an addition-curing silicone for bite registration in crown and bridge techniques, fixing of face-bow registrations and intraoral pin tracing templates.

The new formula of **Registrado X-tra** achieves an extremely high final rigidity. The registration remains dimensionally stable even under load. In conjunction with its flexibility and low shrinkage, **Registrado X-tra** is easy to remove without locking into undercuts.

REGISTRADO X-TRA OFFERS THE DENTIST AND TECHNICIAN:

Optimal rigidity

- Easy and safe removal without fracture
- Convenient trimming with scalpel, scissors or cutter
- No distortion in articulation, especially in free-end situations

Fast setting time

- Only 30–40 seconds intraorally

Extra flexibility

- No locking into undercuts during removal

Thixotropic properties

- Fine-flowing easy application
- Good wetting and reproduction of details
- Low resistance to occlusion (no elastic deformation, precise bites)

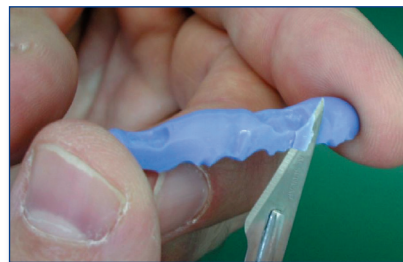
A-silicone

- Can be disinfected
- Dimensionally stable in long-term storage
- Low shrinkage

Bright blue shade

- Good contrast for easy identification

Specific thixotropic properties make the material fine-flowing under pressure. This allows for easy extruding and precise application on the teeth. **Registrado X-tra** does not drip from the teeth and poses no resistance to occlusion. The setting is temperature-controlled, providing adequate time for a stress-free application. The intraoral setting time is reduced to only 30-40 seconds.



Intraoral tips provide a flat ribbon of material for better coverage of the occlusal surface



Presentation

- | | |
|----------|---|
| REF 2035 | pack 2-50ml 1:1 cartridges, mixing tips type 16, intraoral tips type 2 |
| REF 2036 | clinic pack 8-50ml cartridges, mixing tips type 16, intraoral tips type 2 |
| REF 2196 | refill 50 mixing tips type 16 |
| REF 2140 | refill 50 intraoral tips type 2 |

V-Posil

TIME OPTIMIZED HIGH PRECISION VPS IMPRESSION SYSTEM

- Up to 2-minutes of adjustable working time gives control over the pace of the procedure, while the abbreviated thermo-activated 2-minute set time saves time and improves patient comfort
- The rapid snap set reduces the time in the critical zone by up to 50% minimizing potential distortion due to human error resulting in less re-takes
- Heavy Soft Fast material offers an optimal viscosity to load the tray but remains soft enough after it sets for easy removal from the mouth
- Due to its low polyether-like contact angle of less than 10°, V-Posil's superior hydrophilicity displaces fluids (saliva, blood etc.) creating an enhanced contact to the dental anatomy – yielding more precise impressions
- Lab technicians will appreciate the post-set hydrophilicity (less than 6° contact angle) which allows for more accurate stone models and better fitting restorations
- Exceptional tear strength and elastic recovery ensures dimensional accuracy of the impression during and after removal



Presentation

V-Posil Putty Fast

REF 2561 Jar 2 × 450 ml, accessories

REF 2562 Jar 8 × 450 ml, accessories

V-Posil Heavy Soft Fast

REF 2565 Cartridge 380 ml, accessories

REF 2566 Cartridge 2 × 380 ml

REF 2567 Cartridge 2 × 50 ml, accessories

REF 2568 Cartridge 10 × 50 ml

REF 2196 Mixing tips type 16, 50 pcs.

REF 2203 Mixing tips type 30, 50 pcs.

V-Posil Light Fast

REF 2573 Cartridge 2 × 50 ml, accessories

REF 2574 Cartridge 10 × 50 ml

V-Posil X-Light Fast

REF 2575 Cartridge 2 × 50 ml, accessories

REF 2576 Cartridge 10 × 50 ml

REF 2186 Mixing tips type 7, 50 pcs.

REF 2141 Intraoral tips type 3, 50 pcs.

V-Posil Adhesive

REF 2578 Bottle 10 ml

Affinis Heavy, Aquasil Ultra Heavy Fast, Flexitime Heavy Tray and Imprint 4 Penta Super Quick Heavy are not registered trademarks of VOCO GmbH.

VOCO America Inc.
1245 Rosemont Drive
Suite 140
Indian Land · SC 29707

www.vocoamerica.com
infousa@voco.com

Toll-free phone: 1-888-658-2584
Fax: 1-888-849-3989

